

# Acer PL1320W

ACER PL1320W



The Acer model PL1320W is a DLP laser projector with WXGA 1280 x 800 resolution and a contrast of 2000000:1. The service life is 30000 hours due to the laser, which is over 20.5 years if enjoyed for four hours a day. A built-in horizontal and vertical keystone correction provides freedom when positioning the projector. Thanks to the brightness of 4500 Ansi lumens, a picture width of 682 cm is possible. The projector can also handle slightly brighter rooms with a narrower image width (we recommend max. 455 cm). A smartphone with an MHL connection can be connected directly to the MHL/HDMI port for 1080p / 60 Hz image mirroring (screen mirroring). Playback of 1080P and 4K (compressed) is also no problem for the projector. The projector was launched in 2019 and is no longer sold by the manufacturer.

## Brief Introduction

Beta 2.5

## Display Type



3 x 0,65" DLP

WXGA 16/10 Ti Digital Light Processing Chip

## Ansi-Lumen

Projector 4500 / 3600 im Eco Mode

Screen 1800 Lux (bei 200 cm Screen)

## Contrast

Projector 2000000:1

Screen 2000000:1

## Black Level

Projector 0,0023 min. Lumen

Screen 0,001 min. Lumen

## Offset

## Resolution

WXGA 1280 x 800

1.024.000 Pixel

## Video Modes

UHD (4K2K) 3840 x 2160 compressed

Pal, SECAM, NTSC, HDTV 720p, 1080i, 1080p, 4K UHD (komprimiert), EDTV 480p, 576p

## 3D Compatibility

Side-by-Side | Top-and-Bottom

Frame Sequential (3D Ready)

## Application

Standard-Portabel | External training and company presentations, as well as product presentations.

Wide screen width or rooms with plenty of light (over 200 lumens).

## Light Source

Laser

## Light Life

30000 h.

## Operating Costs

0,00 € Laser

## Focus

Manual

## Zoom

Manual 1,3

## Objective

F=2,5-2,78 f=16,91-21,60 mm

## Throw Ratio

1,19-1,54:1

## Audio

10W

## Connections

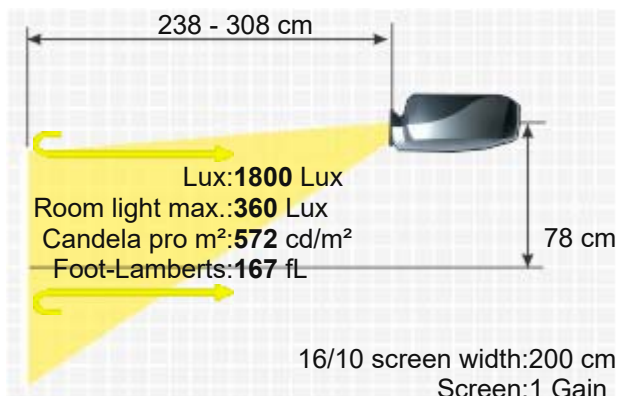
1x HDMI 1.4a

1x HDMI 2.0b mit MHL 2.2

1x D-Sub 15 pin in

1x Cinch Video in

1x Mini Jack Audio in



1x Micro-USB  
1x USB Type A für WiFi  
1x RS232  
1x RJ45



Ceiling Mounting  
Power  
Size WxHxD  
Operating Noise

Yes  
-  
337 x 119 x 265 mm (13,3"x4,7"x10,4") 10,63 L/dm³  
31 / 28 dB in Eco Mode

Weight  
Keystone  
Illumination

4,50 kg / 8,82 lbs.  
Vert.: +/-30° automatisch  
Hori.: +/-30°

Frequenz

H-sync: 15-100 kHz  
V-sync: 24-120 Hz

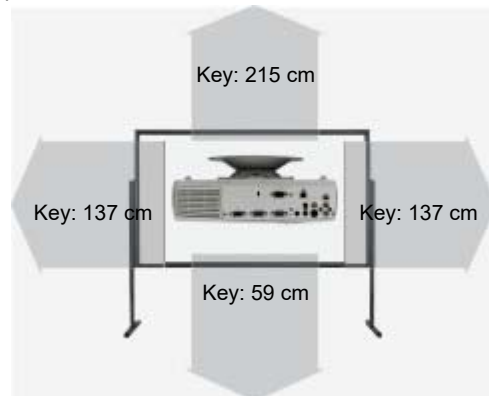
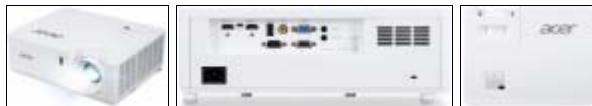
Foot-Lamberts

167 fL / max. 682 cm screen width  
572 cd/m²

Features

- Full HD 1080P compatible
  - Eco Mode
  - Automatic and manual vertical keystone correction
  - Optional Wi-Fi network compatible.
  - Lan network compatible.
  - Wireless Screen Mirroring for iOS/Android/Win10/MacOS.
- 2019 Discontinued (EOL) // Last update of the data: 2024-10-02  
Created: 2021-06-30 11:18:14

Data



More Details



# HCinema

<https://www.projector-database.com/pro/acerpl1320w-en.html>

Due to our ongoing commitment to continuously improve the quality of our projector database, this brochure is also subject to change without notice. HCinema is not responsible for any errors or omissions contained in product descriptions.